

Welcome to

6443 Tenth Line



Re/Max Professionals Inc. Brokerage,
Independently Owned & Operated, 270 The Kingsway #200



A light filled,
spacious
family home
on quiet cul de sac
in the prime
Meadowvale
Trelawny
neighbourhood.

A solid brick home
with 4 + 2 Bedrooms
Fabulous Kitchen
3 Bathrooms
Gas Fireplace
Double Garage
Private Fenced Yard
& Beautiful Garden



Tasi, Norm* & Adrienne Farquhar

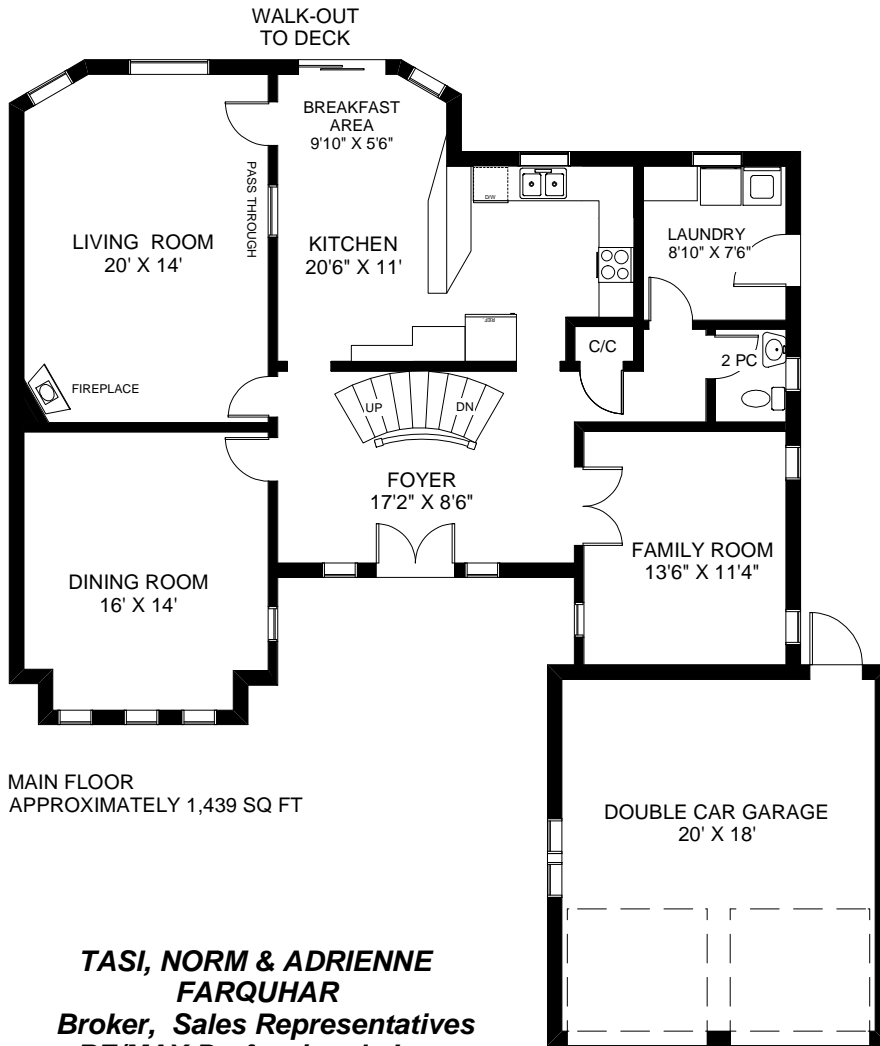
Sales Representatives, *Broker

Direct: 416.231.8754 Business: 416.236.1241

info@realestateadvantageca • www.realestateadvantage.ca



6443 TENTH LINE WEST

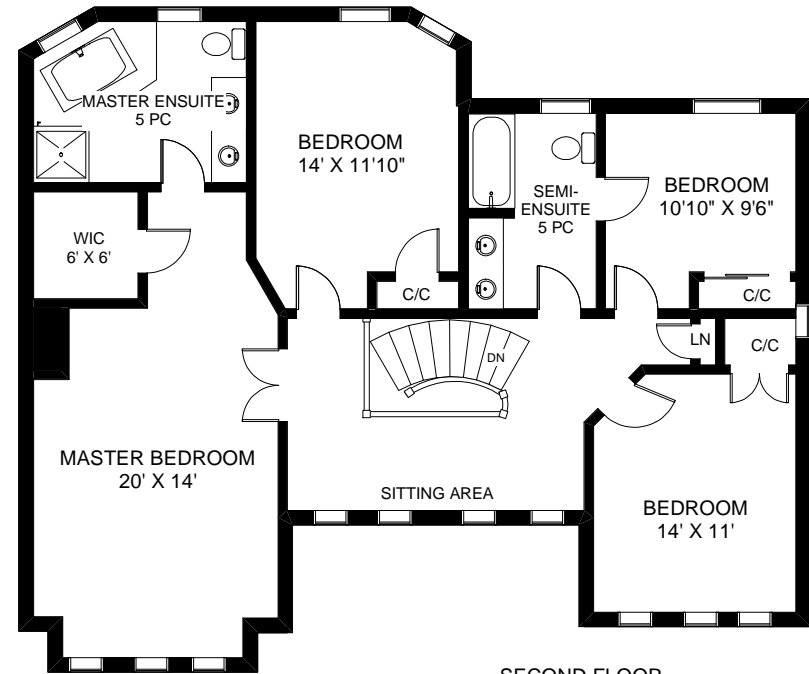


MAIN FLOOR
APPROXIMATELY 1,439 SQ FT

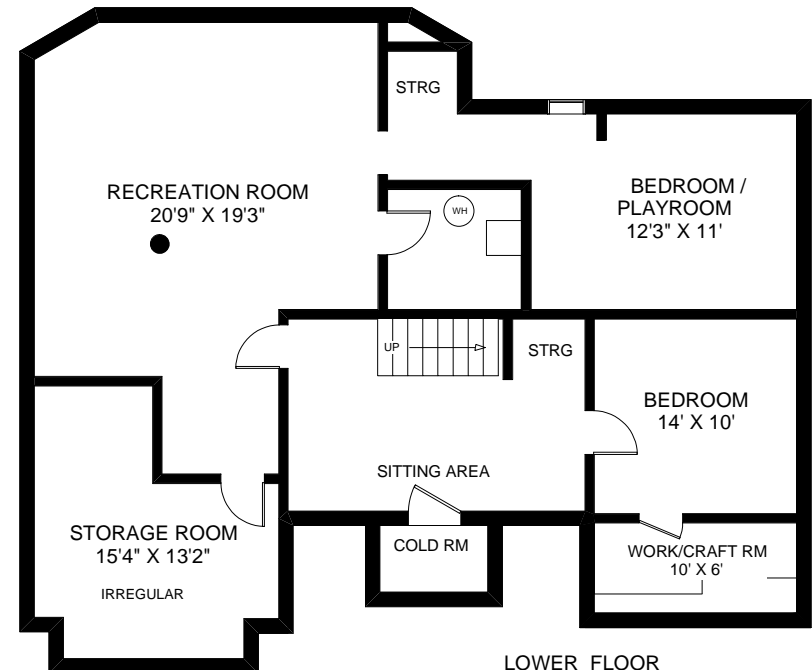
**TASI, NORM & ADRIENNE
FARQUHAR**
Broker, Sales Representatives
RE/MAX Professionals Inc.
(416) 236-1241

FLOOR PLANS BY KIM DORNEY
647-989-6526

Note: Calculations & Measurements are approximate. Provided as a guideline only.



SECOND FLOOR
APPROXIMATELY 1,439 SQ FT



LOWER FLOOR
APPROXIMATELY 1,439 SQ FT

Features of 6443 Tenth Line.

4+2 Bedrooms - 3 Bathrooms - Approx. 2,878 Sq. Ft. with a full Basement

Exterior

- A well designed two storey 4+2 bedroom home with a brick exterior and double garage
- Welcoming front yard with large tree and a stamped concrete walkway and porch
- Private fully fenced backyard featuring a deck with an arbour and lattice work, lovely perennial garden and custom built sandbox.

Main Floor

- Grand entrance through double doors into attractive foyer with a view of the curving staircase to the upper level
- The ceramic floor flows from the entry through the kitchen, 2 piece bathroom and main floor laundry/mud room with it's built-in storage, folding counter and walk-out to the side yard
- Fabulous kitchen with a view of the family room and walk-out to the deck and garden; large window, potlights, numerous cupboards, built-in pantry and two tiered wrap around bar/counter with seating for 4⁺.
- Bright living room with a hardwood floor, gas fireplace with marble hearth & surround, potlights and a large window overlooking the deck & yard
- Large formal dining room overlooking the cul de sac
- Separate family room offers a quiet retreat

Upper Level

- The upper landing is lined with windows with broadloom through to the bedrooms
- Large Master Bedroom with walk-in closet, luxurious 5 piece ensuite with double sinks, glass shower and oversized tub under two windows; tiled surround and floor
- The bright second bedroom is also large
- The 3rd Bedroom has a double closet and built-in cupboards
- The main 5 piece bathroom has double sinks and door to 4th bedroom (a semi-ensuite)

Lower Level

- Berber Carpet through main area including large "L" shaped games/recreation room
- Separate office/bedroom
- Play room/bedroom with hand painted mural
- Loads of storage in the basement, including a cold room



Prospective purchasers should satisfy themselves as to the accuracy of the information contained in this feature sheet. All measurements are approximate. The statements contained herein are based upon information furnished by principals and sources which we believe are reliable, but for which we assume no responsibility. Not intended to solicit buyers or sellers currently under contract with a broker. E&OE