

Welcome to
53 Edwin Avenue

THE FARQUHAR
ADVANTAGE 



www.RealEstateAdvantage.ca

Tasi*, Norm** & Adrienne* FARQUHAR

*Sales Representative ** Broker



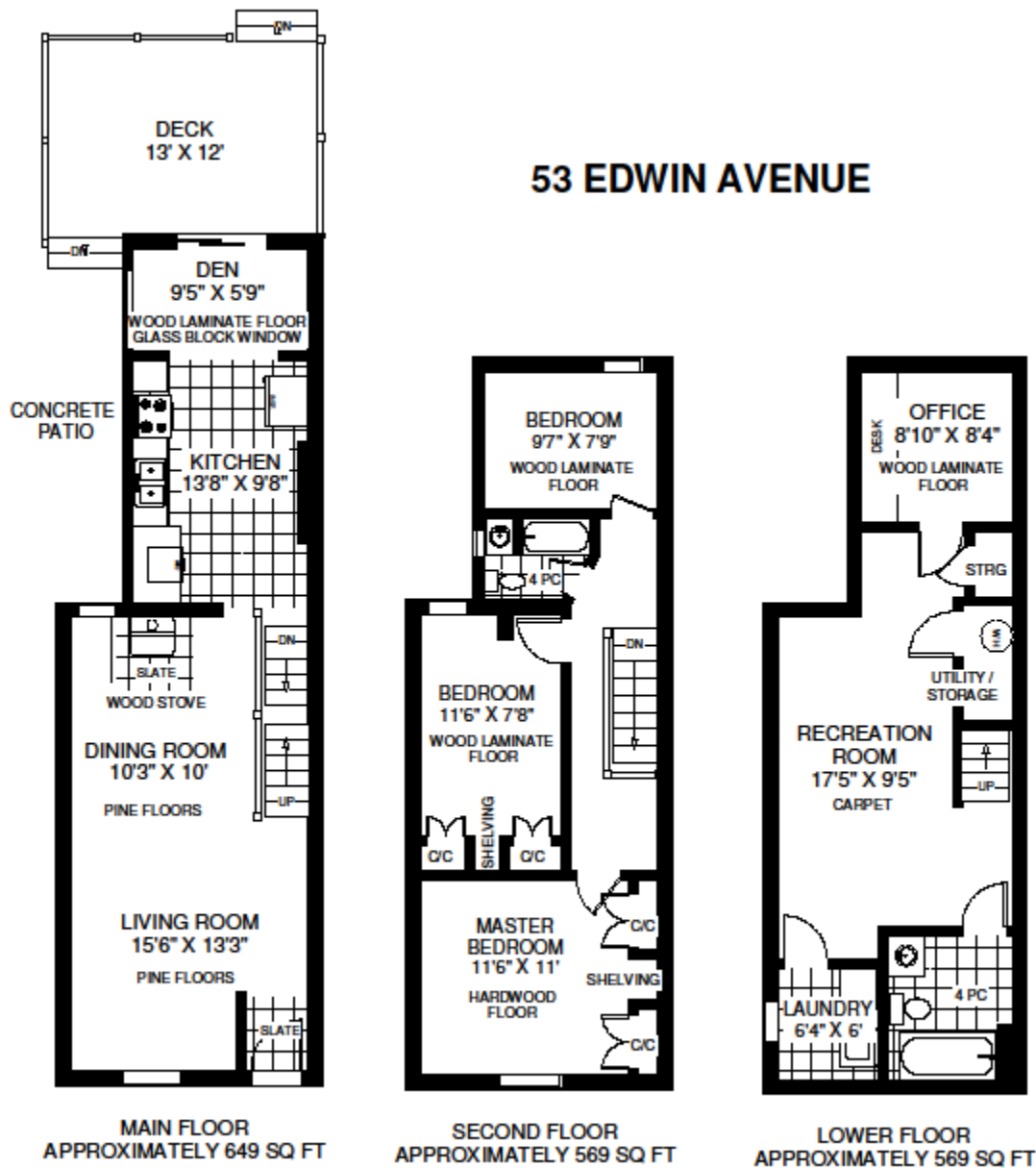
RE/MAX Professionals Inc. Brokerage, Independently Owned and Operated
270 The Kingsway, Suite 200, Toronto, ON, M9A 3T7

416-236-1241

\$359,000 Lot Size: 17 ft. X 145 ft.

Updated semi in The Junction. Featuring wood floors; wood-burning fireplace; eat-in kitchen with computer desk; newly renovated basement with pot lights, 4 pc. bathroom, laundry room and office; large master bedroom with tons of closet/storage space. Walkout to a new wood deck, spacious backyard and single car garage. Stylish details include slate in entry way and around fireplace, a charming wood stove and glass block window.

Our clients particularly enjoy the family friendly features of both the home & neighbourhood. It is a "short walk to several parks, community centers, shopping, transit and libraries"... "There is a great backyard, open concept main floor, spacious recreation room and 2 bathrooms."



Note: Measurements & Calculations are approximate. Provided as a guideline only.

Prospective purchasers should satisfy themselves as to the accuracy of the information contained in this feature sheet. All measurements are approximate. The statements contained herein are based upon information furnished by principals and sources which we believe are reliable, but for which we assume no responsibility. Not intended to solicit buyers or sellers currently under contract with a broker. E.&O.E.